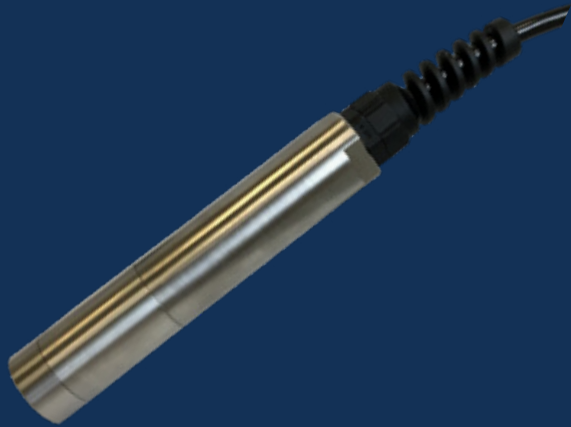


DO PROBE SENSOR



FEATURES & BENEFITS

- Optical technology without calibration
- Real-time DO measurement
- Operator friendly, low maintenance design
- Range for wastewater to high purity applications
- Robust, compact and ultra-low power
- Stainless steel or titanium options available

MUNICIPAL DRINKING WATER
MUNICIPAL WASTEWATER
COASTAL WATERS
INDUSTRIAL WASTEWATER

WATER QUALITY
MONITORING
SOLUTIONS

OVERVIEW

Real Tech's dissolved oxygen (DO) sensor provides rapid real-time measurement of DO in water or wastewater. The sensor uses a luminescent optical technology approved by the ASTM International Method D888-05. The compact and robust sensor requires no calibration and very minimal power. Without oxygen consumption, the sensor allows for accurate measurement in many applications, especially those with very low oxygen concentrations.

MODELS

PRODUCT #	NAME	DESCRIPTION
DO1000	Real DO Probe Sensor	0-20 mg/L , 0-20 ppm or 0-200 % saturation

Includes sensor, 50 ft communication cable, and manifold (unless purchased with pole mounting kit). Controller and automatic cleaning system sold separately.

REALTECH
INC.

SPECIFICATIONS

CHARACTERISTIC	TECHNICAL DATA
Model #	DO1000
Measurement Principle	Optical measurement by luminescence
Measurement Ranges	0-20 mg/L 0-20 ppm 0-200 %
Resolution	0.01
Accuracy	+/- 0.1 mg/L +/- 0.1 ppm +/- 1%
Response Time	< 5 s
Temperature Compensation	NTC thermistor
Dimensions	Diameter: 25 mm, Length (not including cable): 146 mm
Materials	Stainless steel 316L or Titanium
Enclosure	IP68
Maximum Pressure	70 PSI
Electrical/Communication	From controller
Storage Temperature	-10°C to 60°C (14 to 140°F)
Weight	1 lb Stainless steel version
Warranty	2-year limited warranty

* Technical Specifications are subject to change without notice.

Real Tech Inc.

1150 Champlain Court,
Whitby, Ontario L1N 6K9 Canada
TF: 1.877.779.2888 T: 1.905.665.6888
info@realtechwater.com

REALTECH
INC.