

# LiquidAi™



# REAL TECH IS BRINGING INTELLIGENCE TO WATER.

Since 2004, our award-winning company has been designing innovative solutions for water quality monitoring and detection. From ultra pure waters to the harshest wastewaters, our modular sensor platform provides the right configuration for our clients' budget and application needs, because we know one size doesn't fit all. Our Liquid Ai services then deliver actionable intelligence to our clients', so they can take control and know what's in their water – **every minute, every day.**

With thousands of clients in over 50 countries around the globe, our enhanced real-time monitoring solutions are helping to detect events faster, optimize water and wastewater treatment processes, reduce costs, improve efficiency, ensure compliance and much more.



## Liquid Ai™

Our new Liquid Ai platform is a suite of services provided by Real Tech to bring intelligent insights to our clients' water quality monitoring applications.

**The Liquid Ai platform can provide 3 fundamental services:**



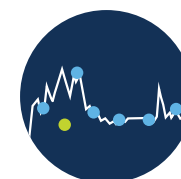
### Remote Monitoring

Secure, web-based platform and IoT enabled device provide access to water quality data anywhere, anytime.



### Calibration Health

On-going calibration monitoring service brings the highest level of reliability, accuracy and confidence to results.



### Anomaly Detection

Add-on to calibration monitoring, enables detection and alert of composition changes in water.

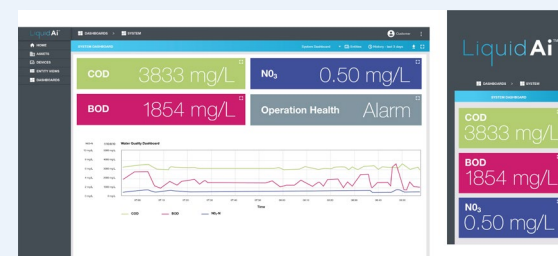
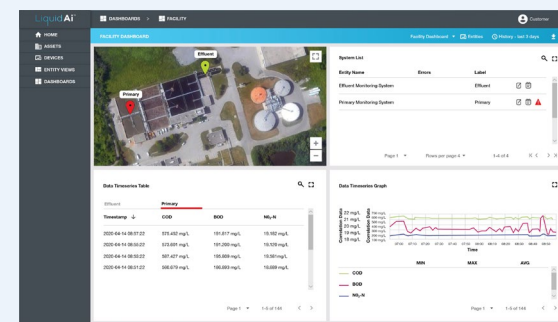


# REMOTE MONITORING

Gain access to your data through a channel that best fits your needs. We provide multiple data access and communication options including our web-based remote monitoring platform, text and email alerts as well as in-plant communication from your Real Tech controller, SCADA or PLC.

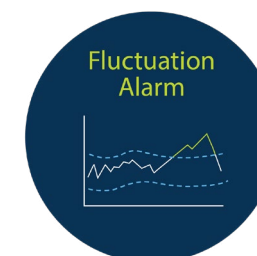


# LIQUID AI DASHBOARD



- Access to sensor information anywhere, anytime with secure web-based platform
- Includes visual map of network with user friendly labeled pins for device site locations throughout network and status of monitoring results
- Dashboards can be configured to user preferences

# ALARMS & DATA ANALYSIS



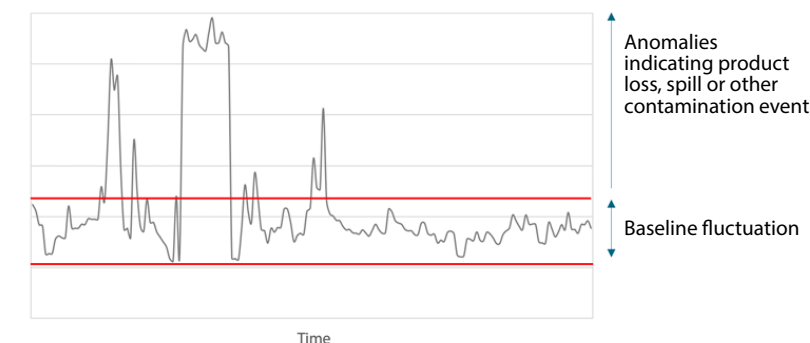
**FLUCTUATION ALARM**  
A dynamic data analysis tool that evaluates the data within a predetermined window period.



**SUDDEN CHANGE DETECTION**  
Helps with detecting fouling rates and cleaning frequency requirements, a subset of Fluctuation Alarms.



**THRESHOLD ALARM**  
Enables the user to set max/min thresholds for any parameters being monitored.





# CALIBRATION HEALTH

To ensure your monitoring system produces reliable and accurate data that is as predictive of the lab as possible. We provide a one-time or an ongoing Calibration Health Monitoring service. This active monitoring service enables detection of new contaminants and water quality composition changes that may affect the calibrations performance. Continuous calibration improvements are made to ensure confidence and trust in your results over the long term – even in the most complex environments.

## Results:

- Reliability
- Accuracy
- Overall Detection Capabilities

Advanced Real-Time Sensors



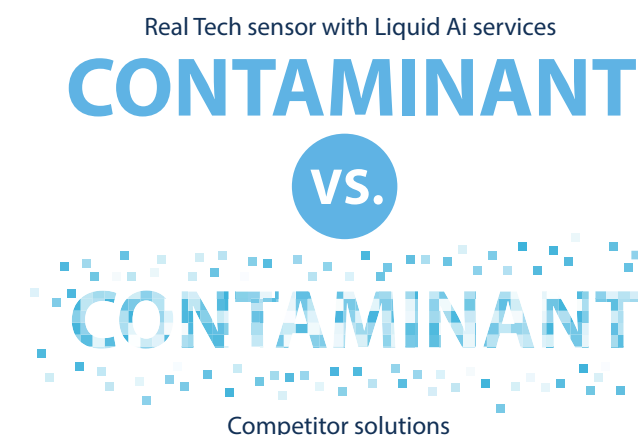
Liquid Ai Data Analytics Services



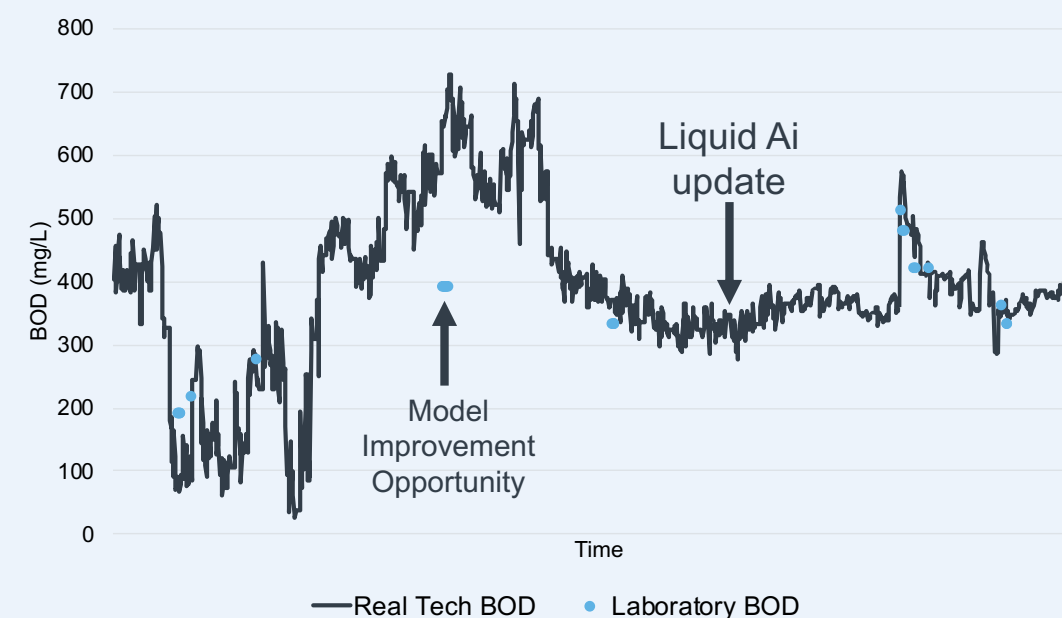
Endless Detection Possibilities & Confidence in Results

# WE BRING MEANING TO DATA

Our Liquid Ai calibration service provide you with the highest level of confidence and trust in your water quality results. Unlike global calibrations that lose relevancy over time, our custom calibrations become more robust as we continue to learn your water. The longer your Real Tech system is installed, the smarter it becomes with Liquid Ai service.



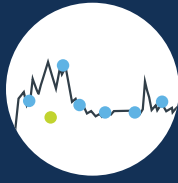
## Custom calibration services improve detection accuracy & reliability



Initial global calibrations may not capture full expected range or composition of organics may change.

**MODEL 1: Initial Global Calibration**  
Average % error = 32.88

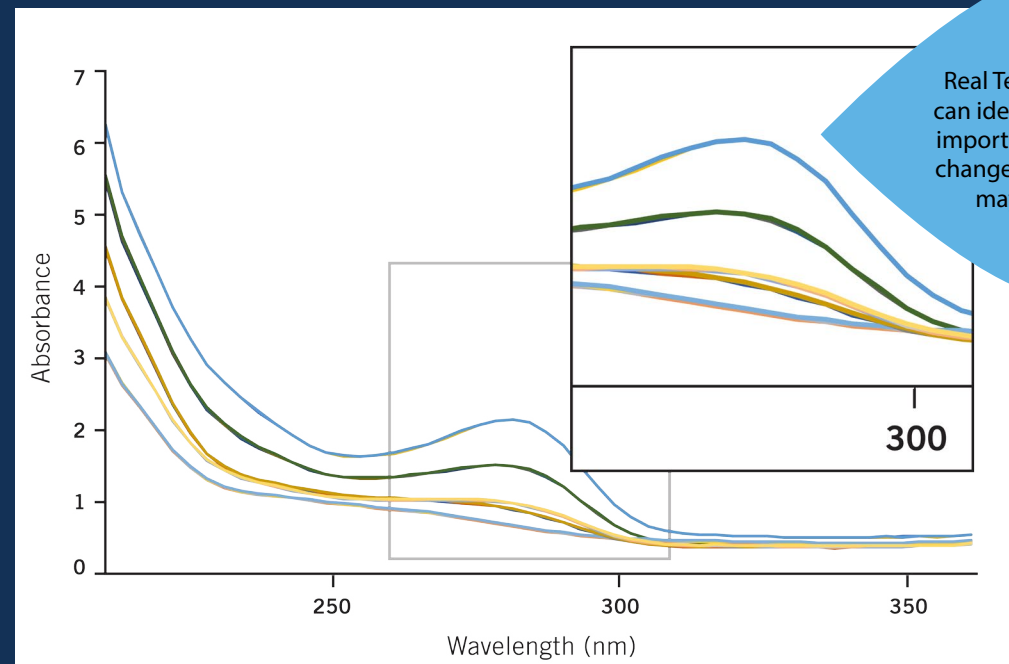
**MODEL 2: Liquid Ai Update**  
Average % error = 3.7



# ANOMALY DETECTION

Our Liquid Ai platform also provides an Anomaly Monitoring service for real-time detection of anomalies or uncharacteristic events that may not be detected by the current parameters or compounds being monitoring. Understanding that the contaminants or events detected through our health and event monitoring services are valuable insights for plant operations. This service provides invaluable insights for plant operations improving real-time intelligence for better decision making.

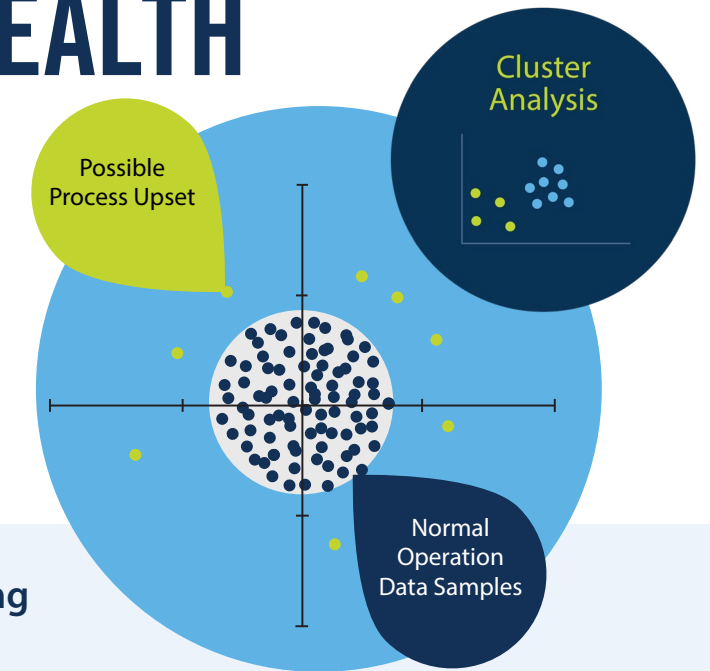
Anomaly detection services allow for identification of composition changes.



Real Tech's algorithms can identify and alert to important composition changes that otherwise may go unseen.

# EVENT DETECTION & CALIBRATION HEALTH

By comparing raw data continuously against the calibration set data, anomaly events can be detected. This can also help determine on when to best collect samples to improve calibration accuracy.



Real Tech is at the forefront of providing intelligence to water across the entire digital infrastructure.



Real Tech's sensors create valuable data to help users understand the fundamental question of *"What is in my water?"*

All process control, treatment decisions and management come from this basic understanding.

With increased processing power and connectivity, sensors can now become more data rich and allow for the opportunity to apply data analytics to bring further meaning and intelligence to water quality data.

The results create a whole new world of opportunity to advance the management of water.

**Take control, know what's in your water**



EVERY MINUTE OF  
EVERY DAY

WHERE THERE IS WATER  
WE ARE THERE

1000's of clients in over 50 countries  
trust and rely on Real Tech solutions to  
meet their water quality monitoring needs.

Discover more about our products today:  
[realtechwater.com/liquid-ai](https://realtechwater.com/liquid-ai)

**Real Tech Inc.**

1150 Champlain Court,  
Whitby, Ontario L1N 6K9 Canada  
TF: 1.877.779.2888 T: 1.905.665.6888  
[info@realtechwater.com](mailto:info@realtechwater.com)

**REALTECH**  
INC.